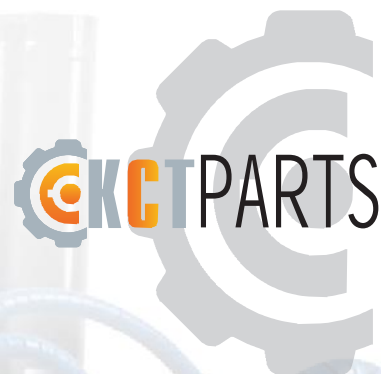


Swingotilt®

INTEGRATED GRAB MODULE



Easy handling of difficult tasks. SMP's Grab module simplifies work on construction and other sites. It smoothly and simply handles curb stones, posts and timber, and is also extremely useful when laying pipes and drains.

The Grab Module is compact and is easily installed and removed, under the Swingotilt®, like any other tool.

The grab module is manufactured for high durability, strength and low weight. Lifting is secure due to the integrated load retention valves in the hydraulic cylinders and with three finger grab as standard.



TECHNICAL SPECIFICATION GRAB MODULE

Grab module	Grab sync	Claw opening (mm)	Load (kg)	Approx weight (kg)
GM S40	x	450	Max 600	40
GM S45 / 50	x	600	Max 700	65
GM S60	x	800	Max 1000	130
GM S70	x	800	Max 1000	130
GM S1 / S2	x	800	Max 1000	130
GM SMP1 / SMP2	x	800	Max 1000	130

Weights can vary depending on design of product